

# Pewsey Area Board Profile



**2014 – 2026  
(Draft\_V1)**



## 1.0 PEWSEY AREA PROFILE

### 1.1 Introduction

The Wiltshire Open Space and Play Area Study is presented in two parts. The first part comprises an overview of the whole study and includes details on local needs, methodology, open space typologies and analysis of provision which combine to make recommendations for future provision and policies for open space in the district. The second part of the study comprises 18 Area Board profiles which provides more localised information. The Area Board profiles should be read in conjunction with the main report (part 1). Each profile includes:

- Map of the parish showing open space;
- Quantity statistics of provision of open spaces with standards by parish;
- Map showing access to open spaces with standards across the parish;
- Map showing access to open spaces across the main settlement;
- Assessment of quality issues;
- Summary of issues and priorities for the Area Board.

All of the maps provided within this section of the report are intended to be used for indicative purposes only. Larger scale maps have been provided as a separate database to the council.

### 1.2 Pewsey Area Board

Pewsey Area Board is made up of 26 parishes, which include:

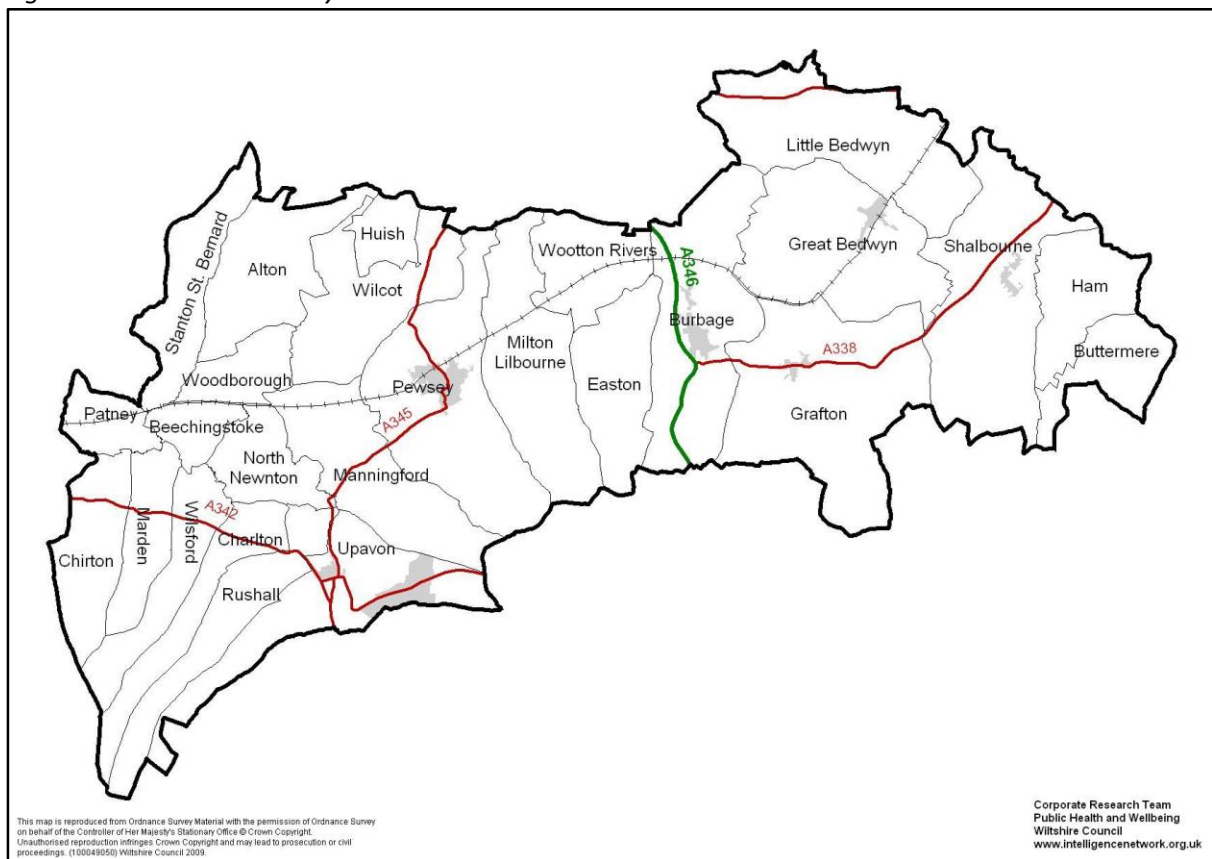
- Upavon
- Pewsey
- Milton Lilbourne
- Burbage
- Shalbourne
- Rushall
- Chirton
- Wilsford
- Marden
- North Newnton
- Stanton St. Bernard
- Alton
- Manningford
- Easton
- Wilcot
- Grafton
- Buttermere
- Great Bedwyn
- Ham
- Little Bedwyn
- Patney
- Beechingstoke
- Woodborough
- Huish
- Wootton Rivers
- Charlton (Upavon)

The Wiltshire Core Strategy places settlements within the Pewsey Area Board in the following hierarchical structure:

- **Local Service Centres:** Pewsey
- **Large Villages:** Burbage, Great Bedwyn, Shalbourne and Upavon
- **Small Villages:** Alton Priors / Alton Barnes, Charlton St Peter, Chirton, East Grafton, Easton Royal, Ham, Hilcott, Little Bedwyn, Manningford Bruce, Marden, Milton Lilbourne, Oare, Rushall, Stanton St Bernard, Wilcot, Woodborough and Wootton Rivers.

Figure 1 below shows the area map of Pewsey Area Board with parish boundaries and main transport routes mapped.

Figure 1: Parishes in Pewsey



### 1.3 Pewsey Village

Pewsey Community Area is rural in nature made of villages as opposed to towns, it does however contain one of the largest villages within Wiltshire; Pewsey. Pewsey in the service centre for the Pewsey Community Area, providing an important role for both services and employment. Pewsey has good transport connections afforded by a rail link to London, and is located on the A345 approximately eight miles to the south west of Marlborough and thirteen miles to the east of Devizes. The village is popular as a commuter settlement, particularly with the benefits of a rail link, there are two mainline stations in the area (Pewsey and Great Bedwyn). However, due to the rural nature of the area other public transport services are limited. The area is home to a rich rural landscape including a proportion of the North Wessex Downs AONB, and the Kennet and Avon Canal passes through the community

area, providing a significant green infrastructure asset. The Community Area is very rural and therefore relies heavily on farming and related industries as well as tourism.

The importance of the Kennet and Avon Canal and access to major national monuments, such as the World Heritage Site at Avebury and Stonehenge, enhance the attractiveness of the area. In addition, the community area is rich in wildlife and is especially strong in the provision of woodland areas and chalk downland.

## 1.4 Population

Figure 2: Parishes and their populations in Pewsey Area Board

Parish Name	Size (Ha)	Population
Upavon CP	1356.227	1196
Pewsey CP	1908.694	3634
Milton Lilbourne CP	1410.643	534
Burbage CP	1742.618	1772
Shalbourne CP	1964.534	558
Rushall CP	891.806	143
Chirton CP	779.473	406
Wilsford CP	708.592	89
Marden CP	551.022	112
North Newnton CP	557.541	430
Stanton St. Bernard CP	826.032	189
Alton CP	1032.19	249
Manningford CP	1250.766	405
Easton CP	896.757	253
Wilcot CP	1161.875	515
Grafton CP	2263.306	686
Buttermere CP	607.993	49
Great Bedwyn CP	1679.5	1353
Ham CP	764.258	161
Little Bedwyn CP	1710.383	250
Patney CP	358.355	155
Beechingstoke CP	293.512	157
Woodborough CP	416.199	292
Huish CP	298.441	43
Wootton Rivers CP	704.599	228
Charlton (Upavon) CP	701.535	86
<b>26</b>	<b>26836.851</b>	<b>13945</b>

As the table shows there is a total population of 13,945 inhabitants in Pewsey and the Area Board covers 26,837 hectares of land. The population density in the Area Board is relatively low due to the rural nature of the area and lack of major towns.

## **1.5 Pewsey Joint Strategic Assessment 2013-2015**

The JSA provides local data about the area and plays a key role in ensuring informed decisions are made about the community. The data presented consists from a range of community level data and have contributed to the CAJSA for 2013- 2015.

The current CAJSA includes new chapters on culture and leisure giving a broader picture of the community. Updated population figures are included as well as a result of a local survey which asked residents about some of the most important issues facing the council and its partners.

Through the area boards is a growing level of community involvement in decision making and the information presented in the CAJSA will allow for focusing on creating healthy and vibrant communities. There are many opportunities to make the community stronger, including the community campus programme.

Key features within Pewsey:

- In the community area there are 13 recreation fields and 11 sports fields available for informal use. However, 19 of the 31 settlements have no recreation fields and 24 of the 31 settlements have no outdoor sports fields
- The overall coverage of wildlife rich areas is about average for the county. Only 8% of the Sites of Special Scientific Interest (SSSI) land is in 'favourable' condition; this is determined by the condition of Salisbury Plain SSSI. The Ministry of Defence and Natural England are working to bring the SSSI into 'favourable' condition through scrub removal and juniper regeneration; the next SSSI condition assessment is scheduled for 2014.

## **1.6 Core Strategy in Pewsey**

The strategy within Pewsey is to deliver a level of housing and employment provision which helps meet local need and support service and retail provision within the village. Pewsey will only receive modest amounts of growth appropriate to its needs. The role of Pewsey's a local service centre will however be encouraged and strengthened and allocation of modest growth in the community area will help to enhance employment, retail and service provision. Furthermore, there is an aspiration to promote Pewsey as a heritage village for tourism and proposals which positively contribute to this aspiration will be supported, providing they are of high quality design and well integrated with existing built form and setting of the town including using local materials where appropriate. The strategy will respond to the community areas location (in full or part) within a nationally designated landscape. In the Pewsey's community area this includes the North Wessex Downs area of outstanding natural beauty. It will deliver, within the overall objective of conserving the designated landscape, a modest and sustainable level of development.

Other areas of interest which are highlighted in relation to greenspace and recreation in Pewsey include:

- all development within the community area will need to conserve the designated landscape of the North Wessex Downs Area of Outstanding Natural Beauty and its setting, and where possible enhance its locally distinctive characteristics;
- development associated with the Kennet and Avon canal will need to protect and enhance its wildlife value, landscape setting and recreational use;
- development in the vicinity of the River Avon (Hampshire) or Salisbury Plain must protect the habitats, species and processes which maintain the integrity of these Special Areas of Conservation (SAC), and;
- Development which increases recreational pressure upon the Salisbury Plain Special Protection Area will not be permitted unless proportionate contributions are made to offset impacts through the Wessex Stone Curlew Project.

## 1.7 Development Potential

New housing targets for the Pewsey Area Board as identified in the Wiltshire Core Strategy are as follows:

Figure 3: Delivery of Housing (2006-2026) Pewsey Area Board

Area	Requirement 2006-26	Housing already provided for		Housing to be identified	
		Completions 2006-14	Specific permitted sites	Strategic sites	Remainder to be identified
Pewsey Community Area Total	600	306	157	0	137

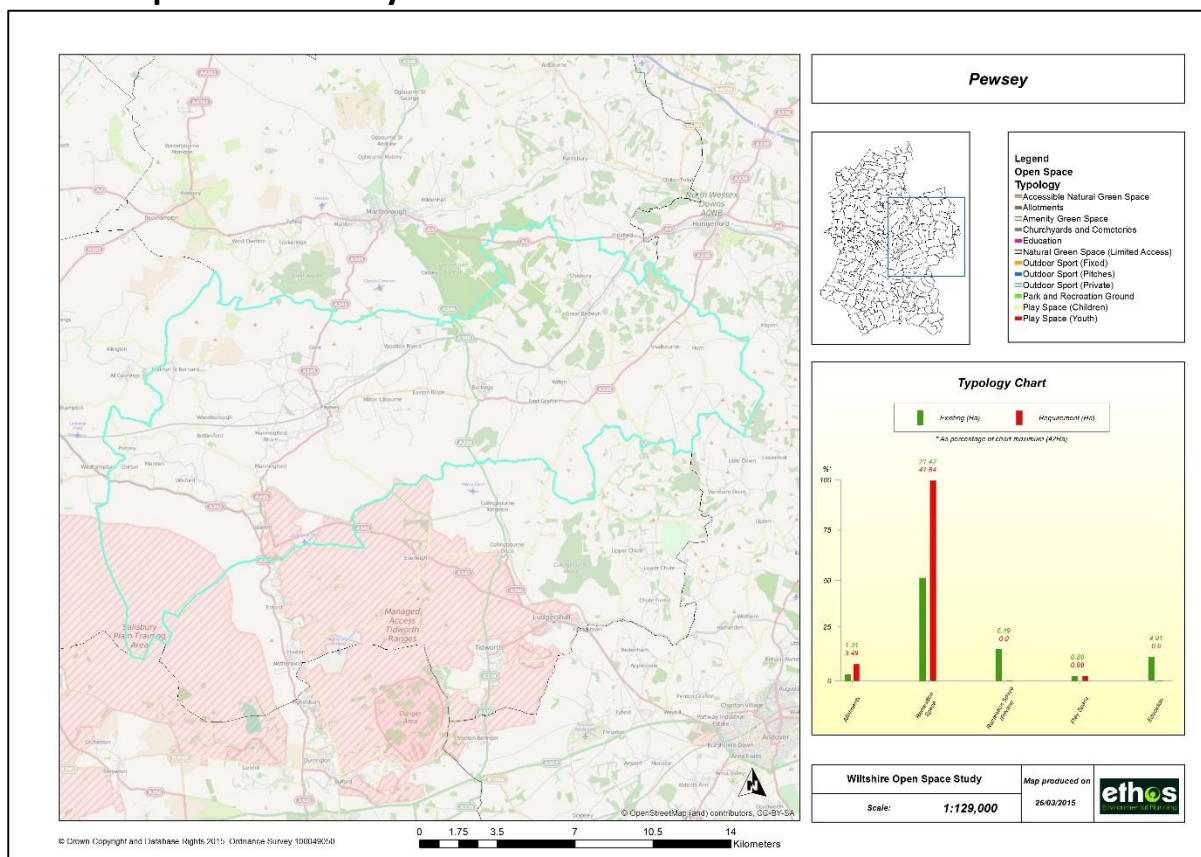
The following locally important rural employment sites will be supported in accordance with core policy 35: Salisbury road business park, Marlborough road and boom croft road, Pewsey; manor farm, Manningford Bohune, Hirata site, Burbage.

Over the plan period 2006 to 2026, 2 hectares of new employment lane (in addition to that delivered or committed at April 2011) will be provided including:

Land at Marlborough Road, Pewsey	Saved Kennet Local Plan Allocation	1.66 ha
----------------------------------	------------------------------------	---------

Approximately 600 new homes will be provided in the community area. Growth in the Pewsey community area over the plan period may consist of a range of sites in accordance with core policies 1 and 2.

## 2.0 Map of Community Area Board



## 3.0 Quantity of Open Space

### 3.1 Introduction

The figures for 'Park and Recreation Ground (combined)' comprise the sum of the following typologies:

- Park and Recreation Ground;
- Outdoor Sports Space (Pitches);
- Outdoor Sports Space (Other);
- Outdoor Sports Space (Private).

It is the 'combined' figure that is used for the purpose of analysing quantity, as such it is only this figure where required provision and supply is relevant. Figures have been provided for the individual typologies which make up the combined figure for information only, however, there is no supply assessment for these, hence an 'NA' (Not Applicable) is provided. Existing quantity figures are also provided for a number of typologies where there are no standards, as such these also do not show figures for required provision (a figure of 0.00 is provided) and supply is 'NA', these typologies are:

- Education;
- Churchyard and Cemetery.

### 3.2 Urban Area Analysis

Table 1 Provision in Pewsey

Typology	Existing Provision (Ha)	Existing Provision (Ha/1000)	Required Provision (Ha)	Required Provision (Ha/1000)	Supply (Ha)	Supply (Ha/1000)	Sufficiency of provision
Allotments	1.34	0.37	0.73	0.20	0.61	0.17	SUFFICIENT SUPPLY
Amenity Green Space	1.16	0.32	5.45	1.50	-4.29	-1.18	UNDER SUPPLY
Park and Recreation Ground (combined)	7.90	2.17	4.36	1.20	3.54	0.97	SUFFICIENT SUPPLY
<i>Park and Recreation Ground</i>	4.56	1.25	4.36	1.20	0.20	0.05	N/A
<i>Outdoor Sport (Pitches)</i>	2.83	0.78	0.00	0.00	2.83	0.78	N/A
<i>Outdoor Sport (Fixed)</i>	0.51	0.14	0.00	0.00	0.51	0.14	N/A
<i>Outdoor Sport (Private)</i>	0.00	0.00	0.00	0.00	0.00	0.00	N/A
Play Space (Children)	0.31	0.09	0.18	0.05	0.13	0.04	SUFFICIENT SUPPLY
Play Space (Youth)	0.05	0.01	0.07	0.02	-0.02	-0.01	UNDER SUPPLY
Education	8.32	2.29	0.00	0.00	8.32	2.29	SUFFICIENT SUPPLY
Churchyards and Cemeteries	1.10	0.30	0.00	0.00	1.10	0.30	SUFFICIENT SUPPLY

### 3.3 Rural Area Analysis

Table 2 Provision across the Community Area Board (Rural Area)

Typology	Existing Provision (Ha)	Existing Provision (Ha/1000)	Required Provision (Ha)	Required Provision (Ha/1000)	Supply (Ha)	Supply (Ha/1000)	Sufficiency of provision
Allotments	1.31	0.13	2.58	0.25	-1.27	-0.12	UNDER SUPPLY
Recreation Space (public and private)	27.91	2.71	30.93	3.00	-3.02	-0.29	UNDER SUPPLY
<i>Recreation Space</i>	21.42	2.08	30.93	3.00	-9.51	-0.92	N/A
<i>Recreation Space (Private)</i>	6.49	0.63	0.00	0.00	6.49	0.63	N/A
Play Space	0.89	0.09	0.72	0.07	0.17	0.02	N/A
Education	4.91	0.48	0.00	0.00	4.91	0.48	N/A
Churchyards and Cemeteries	8.56	0.83	0.00	0.00	8.56	0.83	N/A



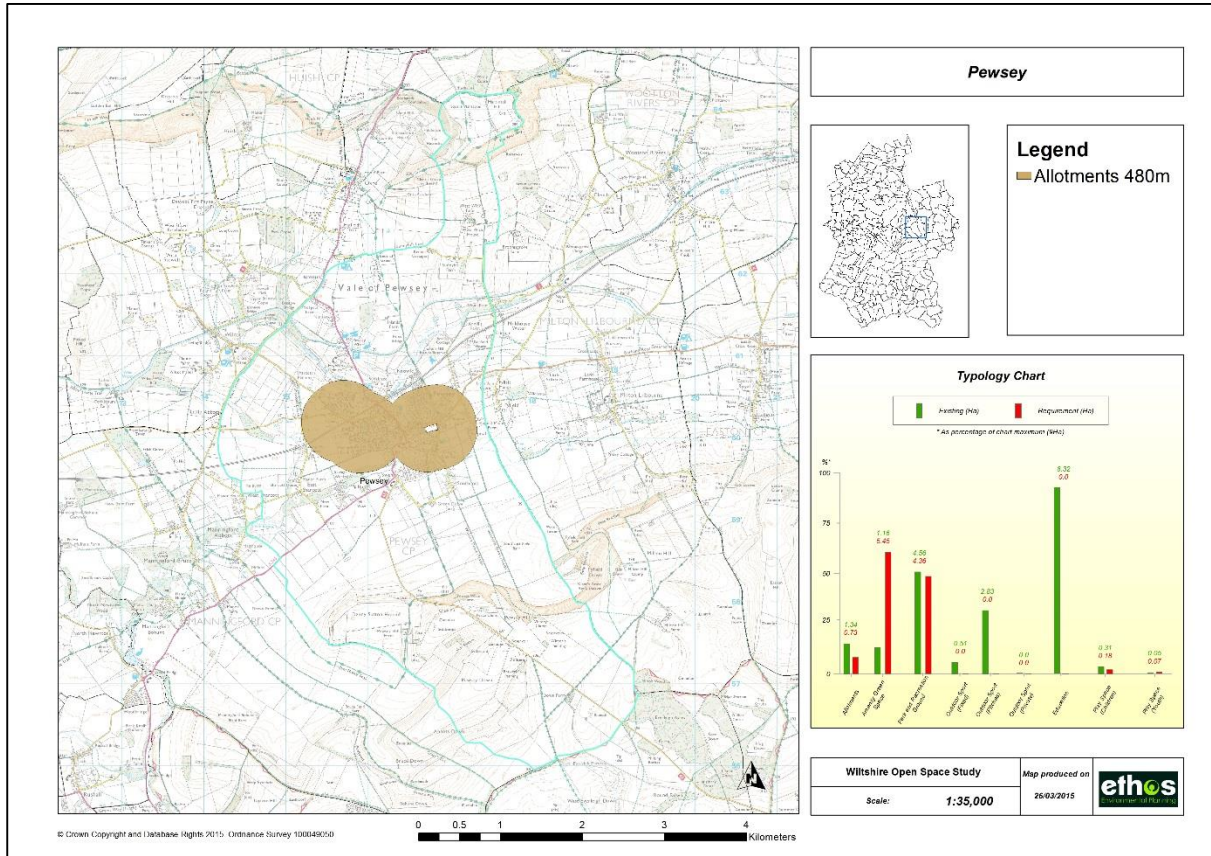
Table 3 Summary of requirements (hectares) for each parish in rural area

PARISH	CAB	Allotments	Recreation Space	Recreation Space (Private)	Play Space	Education	Churchyards and Cemeteries	Accessible Natural Green Space	Natural Green Space
AltonCP	Pewsey	-0.06	-0.61	0.00	0.17	0.00	0.19	0.00	0.00
BeechingstokeCP	Pewsey	-0.04	-0.47	0.00	-0.01	0.00	0.00	0.00	0.00
BurbageCP	Pewsey	-0.44	-3.21	1.77	0.02	0.60	0.93	0.18	0.00
ButtermereCP	Pewsey	-0.01	-0.15	0.00	0.00	0.00	0.00	0.00	0.00
CharltonUpavonCP	Pewsey	-0.02	-0.26	0.00	-0.01	0.00	0.00	0.00	0.00
ChirtonCP	Pewsey	-0.10	-0.92	0.00	-0.03	0.77	0.36	0.00	0.00
EastonCP	Pewsey	-0.06	0.60	0.00	-0.02	0.19	0.30	1.03	0.00
GraftonCP	Pewsey	-0.17	0.25	0.00	-0.05	0.50	0.43	0.00	0.00
GreatBedwynCP	Pewsey	0.61	-2.77	1.48	-0.03	1.32	1.53	47.99	0.87
HamCP	Pewsey	-0.04	-0.48	0.00	-0.01	0.00	0.14	0.00	0.00
HuishCP	Pewsey	-0.01	-0.13	0.00	0.00	0.00	0.00	0.00	0.00
LittleBedwynCP	Pewsey	-0.06	-0.14	0.00	-0.02	0.59	0.30	0.00	0.00
ManningfordCP	Pewsey	0.03	-0.61	0.00	-0.03	0.00	0.54	0.00	0.00
MardenCP	Pewsey	-0.03	-0.34	1.53	-0.01	0.00	0.19	5.15	0.00
MiltonLilbourneCP	Pewsey	-0.13	0.89	0.00	0.01	0.00	0.23	96.69	0.33
NorthNewntonCP	Pewsey	-0.11	-1.11	0.00	-0.03	0.00	0.41	0.00	0.00
PatneyCP	Pewsey	-0.04	1.08	0.00	-0.01	0.00	0.23	0.00	0.00
RushallCP	Pewsey	0.19	-0.42	0.00	-0.01	0.31	0.41	0.00	0.00
ShalbourneCP	Pewsey	-0.14	0.37	0.00	0.07	0.82	0.55	0.00	0.00
StantonStQuintinCP	Pewsey	-0.21	-1.74	4.77	-0.06	0.26	0.33	63.05	3.34
WilcotCP	Pewsey	-0.13	1.37	1.71	-0.03	0.00	0.18	0.00	0.00
WilsfordCP	Pewsey	-0.02	-0.27	0.00	-0.01	0.00	0.00	0.00	0.00
WoodboroughCP	Pewsey	-0.07	-0.88	0.00	-0.02	0.40	0.00	0.00	0.00
WoottonRiversCP	Pewsey	-0.06	0.37	0.00	-0.02	0.00	0.48	0.00	0.00

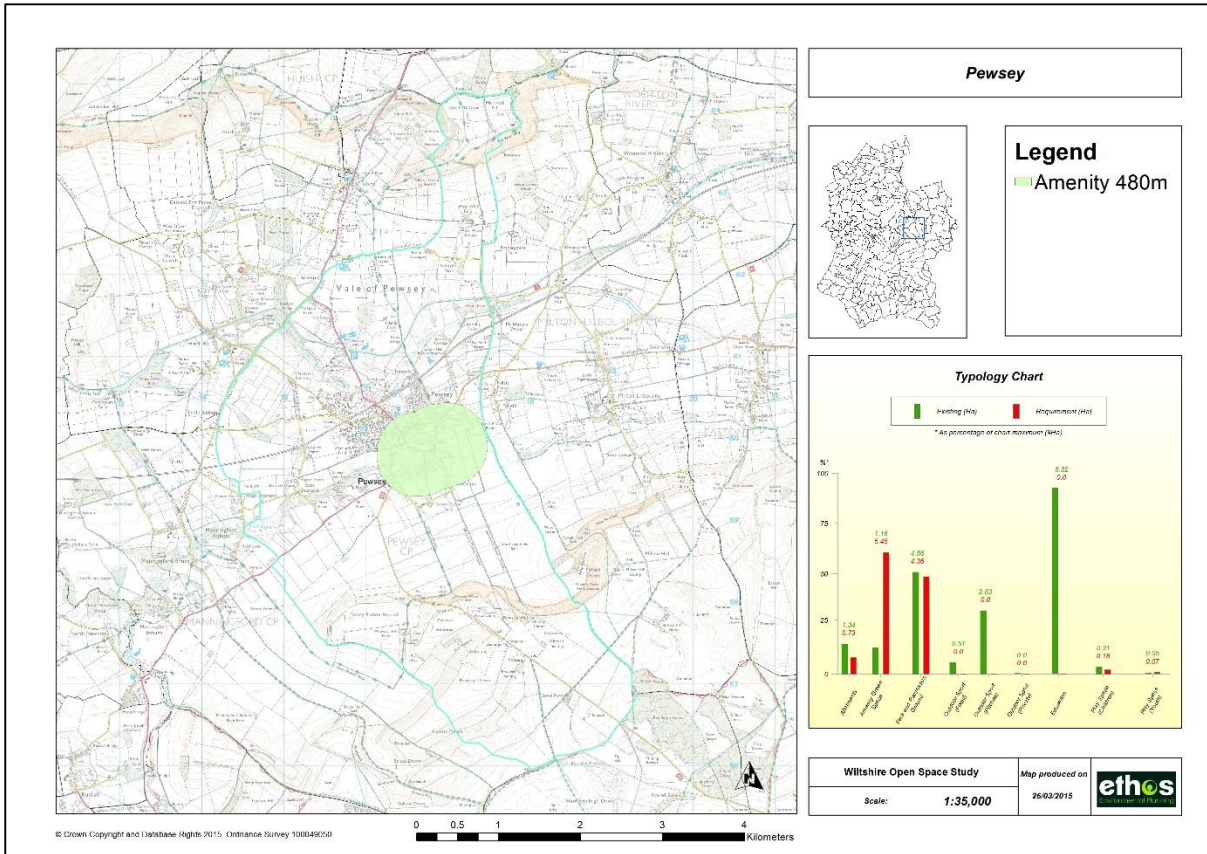
## 4.0 Access Analysis

### 4.1 Access to open space in urban areas

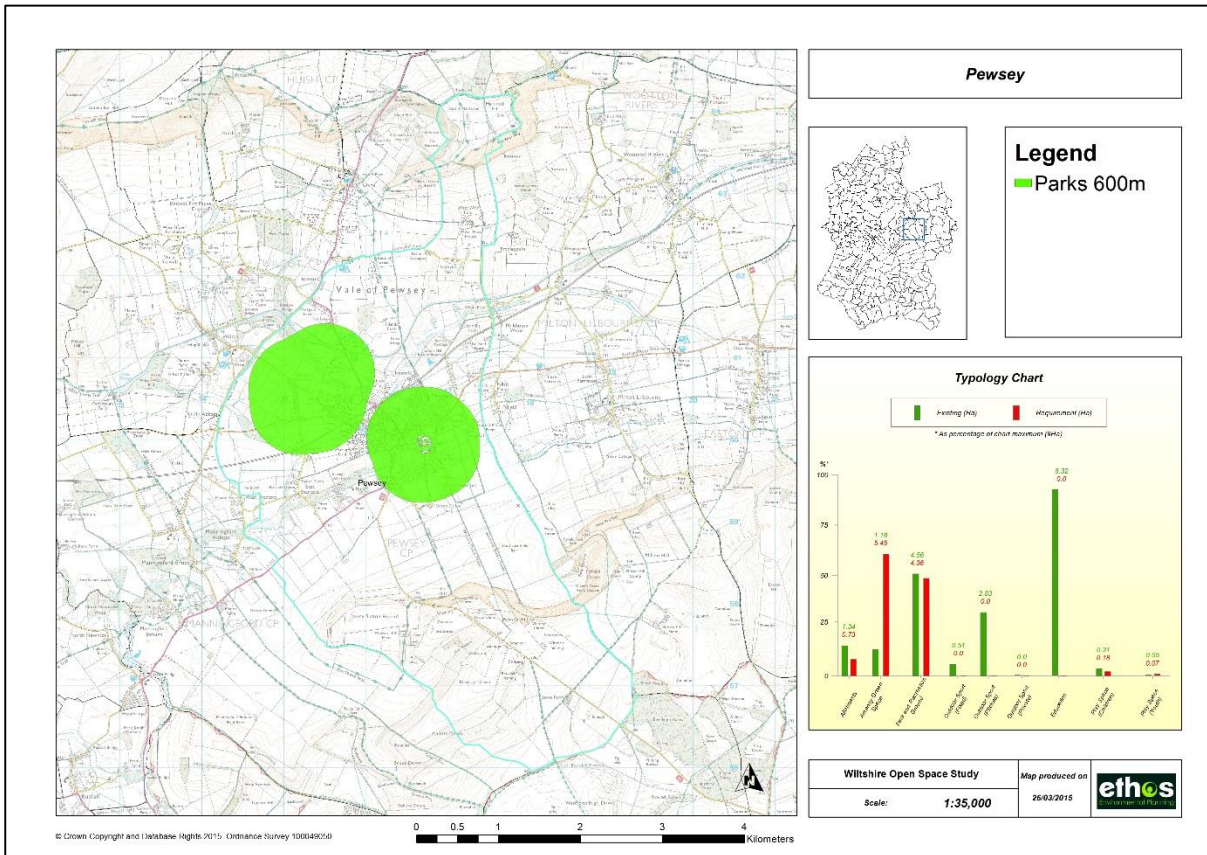
#### Allotments



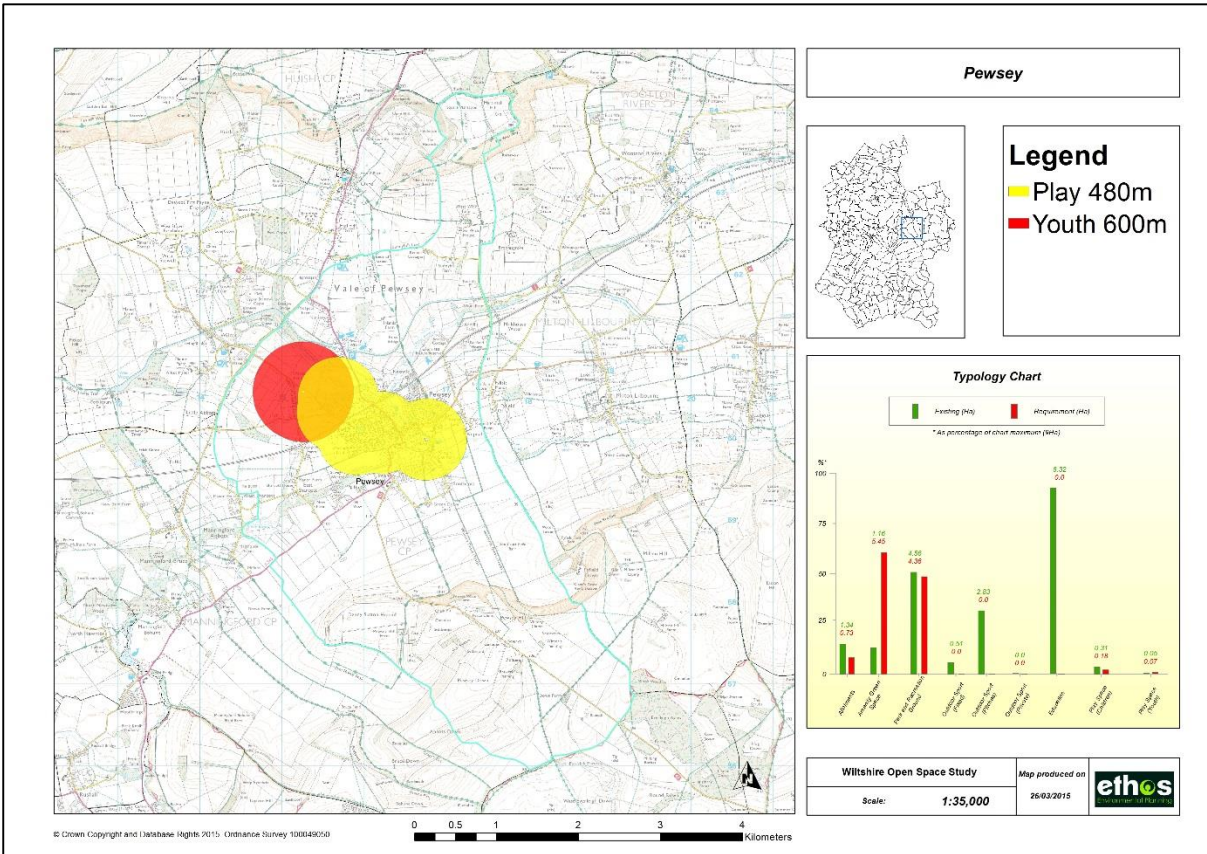
## Amenity Green Space



## Park and Recreation Grounds



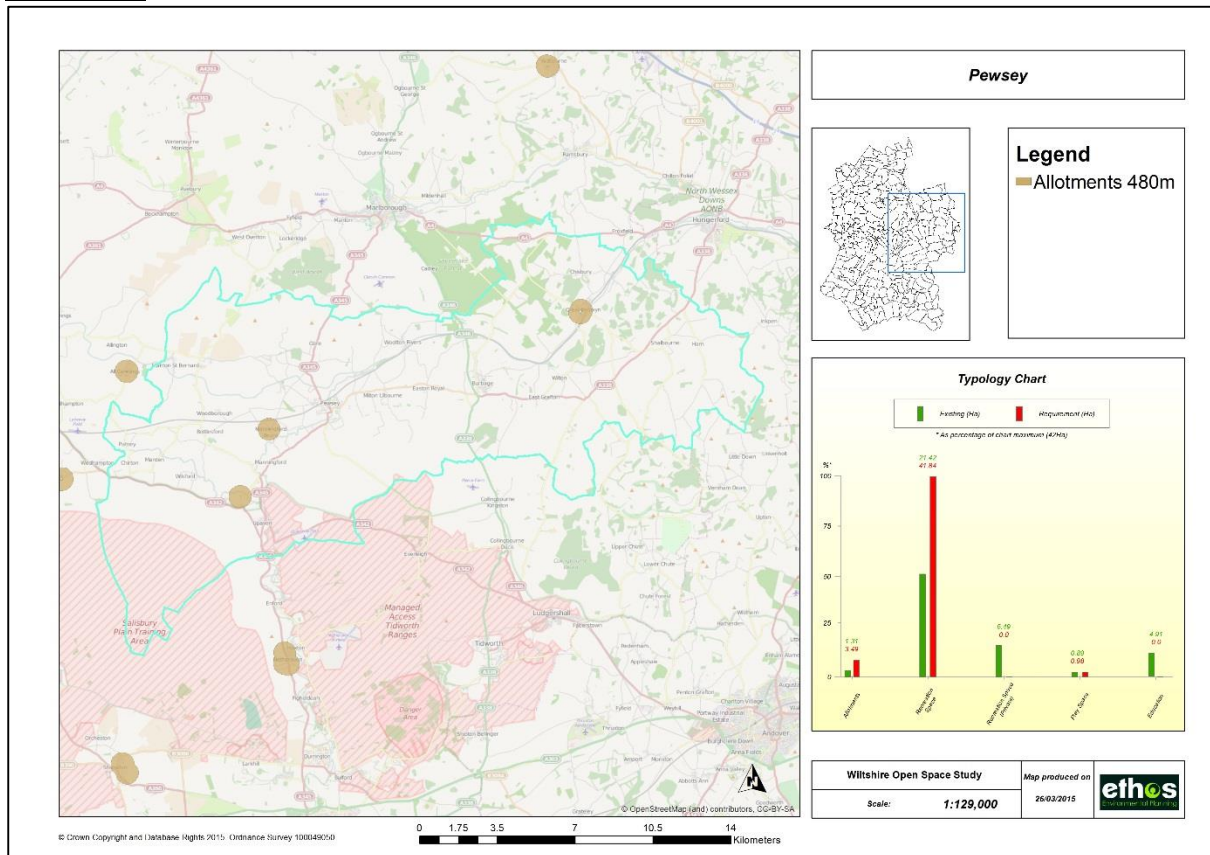
# Play Space (Children & Youth)



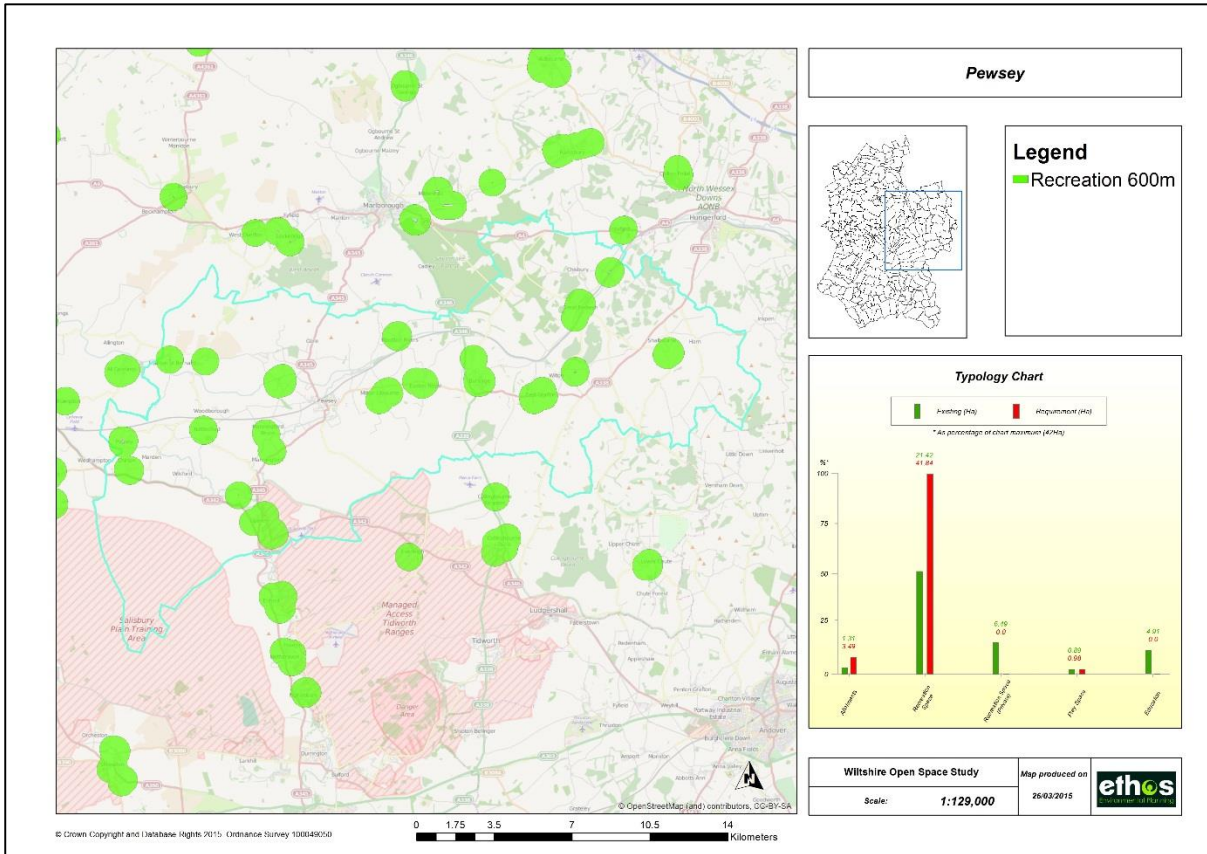
## 4.2 Access to open space in rural areas of Community Area Board

The following maps show access to different typologies of open space within the rural areas of the community area boards. Due to the scale of the areas, the maps are intended to be indicative. Maps have been produced for each of the parishes for each typology, and these are held in a separate database for reference for assessment of individual parishes as required.

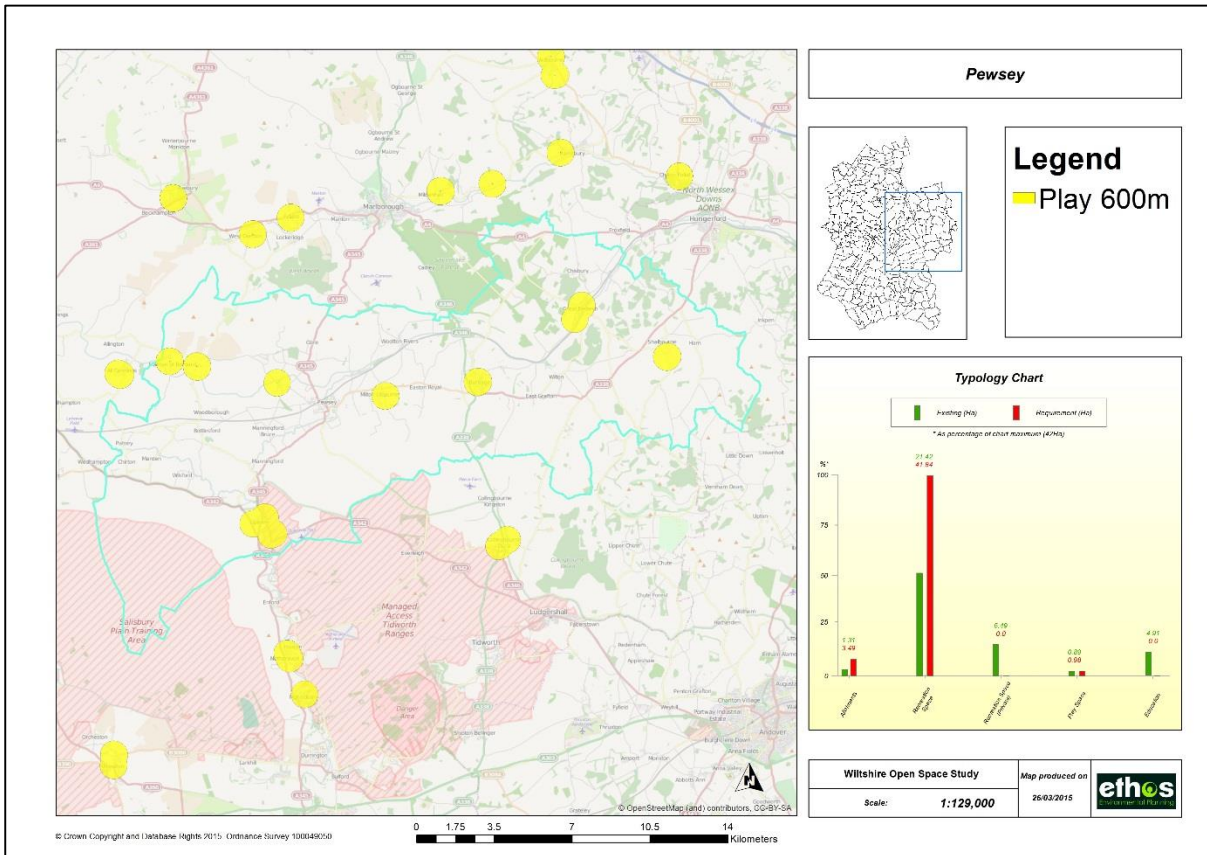
### Allotments



## Recreation Space



## Play Space



## 5.0 Quality

### 5.1 Park and Recreation Grounds

Wilcot Road Rugby Ground consists of two rugby pitches, a floodlit rugby training area and a netball court. There is a large car park and lots of benches, many of which are overgrown with vegetation growing through them. It is recommended that litter bins and dog bins should be provided and the vegetation should be removed from the benches.

Angela Yeates Memorial Ground has a series of three football pitches (senior, junior and mini) and a small clubhouse. The clubhouse is in poor condition, however signs show that there is a planning application for a new clubhouse. There is a lot of litter across the site and it is recommended that bins and dog bins are installed. Installation of a welcome sign and benches would also be beneficial.

Alton Road Park and Recreation Ground in the parish of Wilcot contains an informal junior football pitch and a children's play space with equipment suitable for juniors including swings and a good climbing frame as well as a bouncy toy for toddlers. There is not much provision for toddlers - just a bouncy toy and the equipment is dated. There is no provision for teenagers and there is space to put something in. There is no fence around the play space, and dog fouling is an issue. It is recommended that the play space is improved to cater for all ages with higher play value and fencing is installed around it.

Pewsey Recreation Ground contains six tennis courts in excellent condition with a tennis pavilion for Pewsey Vale Tennis Club, a bowling green, and football pitch for Pewsey Vale football club, a mixed play space for juniors and toddlers with swings, slide, springs, seesaw, and balance walks. The play space is in good condition, however there is some litter across the site. There is no play/provision for teens. There is some grass growing up in the surface beneath the equipment, no welcome sign and dog fouling is an issue throughout the site. It is recommended that more bins are installed to reduce litter and dog fouling, the play space surface is improved and some provision for teens is installed.

Milton Lilbourne Village Hall Recreation Ground has a children's play space with equipment for juniors and toddlers mixed including seesaw, swings, balance walks and rope bridges. There is a large oak tree with seating beneath it which is nice and a good welcome sign with community notice board and lots of posters. The equipment in the play area is very dated, the seesaw in particular is very old. The play space is in need of updating and as there is no fence around the play space, dog fouling is an issue. There is no provision for teens and not very much for toddlers and there is space for installation of more equipment.

Burbage and Easton Village Hall Recreation Ground has separate toddler and junior play spaces which are fenced and in good condition. The junior play space includes slide, tyre balance walks, climbing wall, swings and roundabout and toddler play is bright and colourful and includes: climbing tower with slide, bouncy toys and a climbing frame like a train. There are two football pitches (junior and senior) and a MUGA which is in good condition. The play space is far from the car park, although it is set in front of a row of houses so there is easy access for those residents. There are no bins and litter bins and dog bins should be installed.

A large park and recreation ground located off Andover Road in the parish of Upavon contains a MUGA (in good condition with painted-on hopscotch, a kick wall, basketball hoop), fenced, colourful play space with slide, swings, climbing frame, balance walks and non-fenced play space for juniors/teens with big swing, hanging seesaw, climbing net and fitness equipment. Overall the site is well managed and the site offers high play value. However, two sets of swings are missing in the junior play area and these should be replaced and a welcome sign should be installed.

## 5.2 Children’s Play Space

Farriers Field Play Area in the parish of Upavon is a very small play space for toddlers with an old seesaw and a bouncy toy and there is an area of amenity grass adjacent. The play space is dated, in poor condition (old and mossy) and offers negligible play value. It is recommended that a few more pieces of equipment are installed in the adjacent piece of amenity grass as currently it is unlikely that the play space is used.

There is a children’s play space located to the east of the High Street in Upavon with the River Avon running along the east. The play space contains equipment suitable for juniors and toddlers mixed including slide, climbing frame and slide and is in good condition. The equipment is a bit dated and there is no provision for teens; there is space for more equipment. The play area is not overlooked and access is either along the river bank or through a narrow alley.

## 5.3 Private Sports

Marden Cricket Club has one cricket pitch and cricket practise nets. It is difficult to find as there is no signage and is located at the end of a bumpy farm track. There are no bin, no benches and the small clubhouse on site is in poor condition.

Burbage and Easton Royal Cricket Club is located in the parish of Burbage and contains one cricket pitch and cricket practise nets. The site appears well managed and there is no public access.

## 6.0 Priorities for the area

This section draws on the analysis of quality, quantity and access within this area profile and highlights a number of key issues and priorities, and makes recommendations, where appropriate of how these may be addressed. It is intended that this information would be used as the starting point to inform other strategies, neighbourhood plans which could be taken forward by the Council, Town/Parish Council or the local community.

Issues	Recommendation	Who
--------	----------------	-----



<p><b>Allotments:</b></p> <ul style="list-style-type: none"> <li>• Within Pewsey’s area there is a sufficient supply of allotments, however the rural area is under supplied</li> <li>• Access within the urban area of Pewsey is good with most of the community having good access to an allotment.</li> </ul>	<p>With approximately 600 dwellings planned for this area there is opportunity for providing additional facilities through new development to meet shortfalls in the area.</p> <p>Consideration should also be given to encouraging community growing areas and/or community orchards in existing open spaces.</p>	<p>Wiltshire Council Planning</p> <p>Developers</p> <p>Local Community</p> <p>Town and Parish Council’s</p>
<p><b>Amenity Green Space:</b></p> <ul style="list-style-type: none"> <li>• There is an under supply of Amenity green space within Pewsey</li> <li>• Access across the north of Pewsey is poor with access being best in the south east corner of the urban area.</li> </ul>	<p>Again, on site provision of amenity green space should be sought through new development in areas of under provision.</p>	<p>Wiltshire Council Planning</p> <p>Developers</p> <p>Town Council</p>
<p><b>Park &amp; Recreation Grounds:</b></p> <ul style="list-style-type: none"> <li>• Pewsey has a good supply of park and recreation with good access across the urban area.</li> <li>• The rural area is under supplied. What sites are there are well distributed but don’t fully meet the requirements of their communities</li> <li>• A number of facilities have potential for improvement (see section 5).</li> </ul>	<p>With good provision within Pewsey itself, the key priorities are to maintain and improve the quality of existing provision.</p> <p>Where opportunities arise, new provision in parishes with an identified under supply should be sought (although with limited development in these areas, opportunities may be limited).</p>	<p>Wiltshire Council Planning/ Economic Development/Open Spaces</p> <p>Developers</p> <p>Town Council</p>
<p><b>Children and Youth Facilities:</b></p> <ul style="list-style-type: none"> <li>• Within Pewsey’s urban area there is a sufficient amount provision of children’s play. Access is generally good with a few small gaps.</li> <li>• Youth facilities are under supplied making access across the whole area board poor</li> </ul>	<p>Where development opportunities arise, new on site provision, particularly for young people should be sought.</p> <p>The priority should be for fewer, larger and higher quality play spaces as opposed to a proliferation of smaller play spaces.</p>	<p>Wiltshire Council Planning</p>